

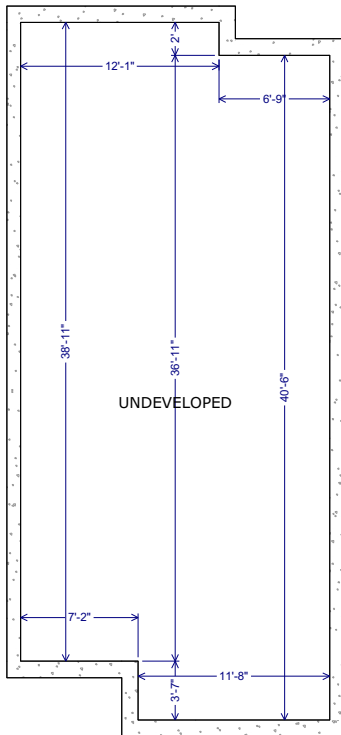
1293 COOPERS DRIVE SW, AIRDRIE, AB

MAIN - 818.38 Sq.ft. / 76.03 m2
UPPER - 806.01 Sq.ft. / 74.88 m2
RMS TOTAL - 1624.39 Sq.ft. / 150.91 m2
BASEMENT - 761.14 Sq.ft. / 70.71 m2
*FINISHED TOTAL - UNDEVELOPED

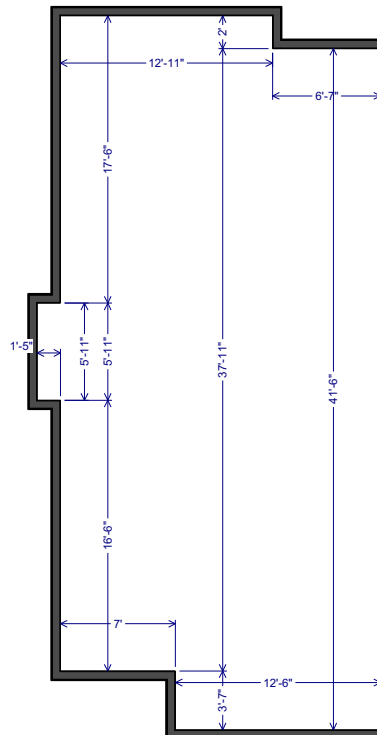
SERGHEI CICALA
CENTURY 21 POWER REALTY
403.592.0040
CICALASERGHEI@GMAIL.COM
NOVEMBER 4, 2019

ATTACHED SINGLE FAMILY

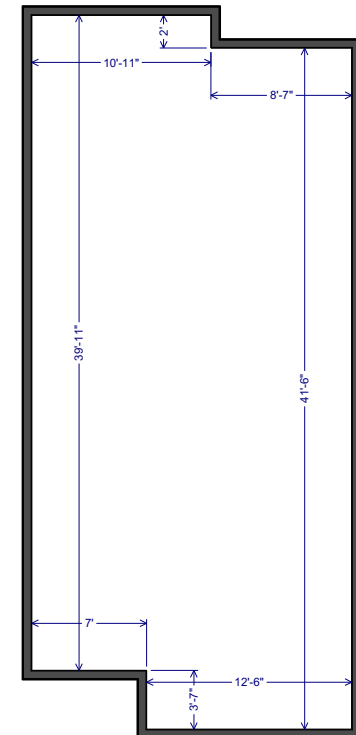
*RECA RMS MEASUREMENTS ARE TAKEN PAINT TO PAINT



BASEMENT



MAIN LEVEL



UPPER LEVEL